

# The Anxious, Depressed Patient

Dr Ian Katz,  
Consultant Psychiatrist,  
Monash Hospital

Wednesday 6<sup>th</sup> August 2014

6.45pm – 9.30pm

**Kimberly Gardens**

441 Inkerman Street,  
St Kilda East

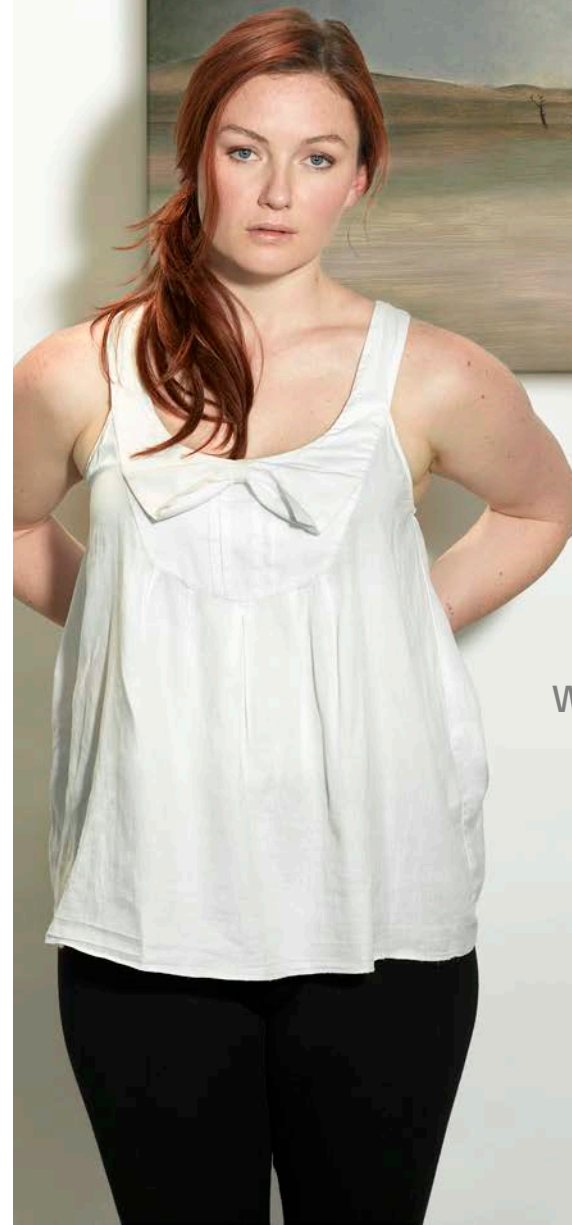
For more information, please contact one  
of your AstraZeneca representatives:

Emily Armstrong on 0410 589 102

Brian Kent on 0434 327 898

Your personal information ("Information") will be collected and used by AstraZeneca Pty Ltd ("AstraZeneca") and Australian OpCo Pty Ltd t/a cievents ("cievents") to register you for this event, for follow-up purposes and for any other purpose described in AstraZeneca's Privacy Policy or cievents' Privacy Policy (see below for links). AstraZeneca and cievents may collect your Information from third parties such as travel agents to organise travel arrangements for an event and from each other. AstraZeneca and cievents may disclose your Information to one another, their related entities or to their service providers (including IT support/service providers). Some of these related entities and service providers may be located overseas including in the US, European Union and Asia Pacific. If you do not provide your Information, AstraZeneca and cievents will not be able to register you for this event. Please refer to our Privacy Policies at <http://www.astrazeneca.com.au/privacy-policy> and <http://www.cievents.com/privacy-statement> for more information about how your Information is handled and how you may seek to access or correct your Information, or submit a privacy complaint. AstraZeneca's address is Alma Road, North Ryde, NSW, 2113 and cievent's address is Level 5, 33 Berry Street, North Sydney, NSW, 2060.

AstraZeneca Pty Ltd, Alma Road, North Ryde 2113  
ABN 54 009 682 311



# The Anxious, Depressed Patient

Wednesday, 6<sup>th</sup> August 2014

6.45pm – 9.30pm

**Kimberly Gardens**

441 Inkerman Street,  
St Kilda East

**AstraZeneca**   
Neuroscience

AstraZeneca invites you to...

**Wednesday 6<sup>th</sup> August 2014**

6.45pm – 9.30pm

**Kimberly Gardens**

441 Inkerman Street, St Kilda East

- 6.45pm **Registration**
- 7.00pm **Welcome**
- 7.30pm **Entree and AstraZeneca Presentation**
  
- 8.15pm **The Anxious, Depressed Patient**  
Dr Ian Katz  
*Consultant Psychiatrist, Monash Hospital*
- 9.15pm **Dessert and Questions**
- 9.30pm **Meeting Close**

Dinner will be served during the presentation

**Registration Form**

Kimberly Gardens

To confirm your attendance  
please fax your RSVP to cevents

**03 9676 6111**

by 1/08/14

(PLEASE PRINT CLEARLY IN CAPITALS)

Name: \_\_\_\_\_

Practice: \_\_\_\_\_

Address: \_\_\_\_\_

Phone: \_\_\_\_\_

Fax: \_\_\_\_\_

Email: \_\_\_\_\_

Please specify any dietary requirements:

\_\_\_\_\_

51J-E3. 06/14

Attendance at AstraZeneca educational meetings is by invitation only and is limited to registered healthcare professionals  
The company seeks no commitment from external stakeholders to take any action as a result of the invitation or related support